



Location Intelligence  
Infrastructure Asset Management

# Confirm<sup>®</sup>

Mapping Link Install

v24.00f.AM

Information in this document is subject to change without notice and does not represent a commitment on the part of the vendor or its representatives. No part of this document may be reproduced or transmitted in any form or by any means, electronic or mechanical, including photocopying, without the written permission of Confirm.

© 2024 Confirm. All rights reserved.

Products named herein may be trademarks of their respective manufacturers and are hereby recognized. Trademarked names are used editorially, to the benefit of the trademark owner, with no intent to infringe on the trademark.

## Open Source Attribution Notice

The Confirm suite of products contain the following open source software:

- Feature Data Objects v 3.5.0, which is licensed under GNU Lesser General Public License, Version 2.1, February 1999 with the unRAR restriction. The license can be downloaded from: <http://fdo.osgeo.org/licenceAndGovernance.html>. The source code for this software is available from <http://fdo.osgeo.org/content/fdo-350-downloads>
- MrSID software (specifically the mrsid32.dll) is used under license and is Copyright © 1995-2002, LizardTech, Inc., 1008 Western Ave., Suite 200, Seattle, WA 98104. All rights reserved. MrSID is protected by U.S. Patent No. 5,710,835. Foreign patents are pending. Unauthorized use or duplication prohibited.

Patented technology in the Software was developed in part through a project at the Los Alamos National Laboratory, funded by the U.S. Government and managed by the University of California. The U.S. Government has reserved rights in the technology, including a non-exclusive, nontransferable, irrevocable, paid-up license to practice or have practiced throughout the world, for or on behalf of the United States, inventions covered by the patent, and has other rights under 35 U.S.C. § 200-212 and applicable implementing regulations.

For further information, contact Lizardtech.

- NodaTime, version number 1.3.10, which is licensed under the Apache license, version number 2.0. The license can be downloaded from <http://www.apache.org/licenses/LICENSE-2.0>. The source code for this software is available from <http://nodatime.org/>.
- Chromium Embedded Framework, version 3, which is licensed under the New BSD License. The license can be downloaded from <http://opensource.org/licenses/BSD-3-Clause>. The source code for this software is available from <http://code.google.com/p/chromiumembedded/downloads/list>.
- Xilium.CefGlue, version 3, which is licensed under the MIT License (with portions licensed under the New BSD License). The licenses can be downloaded from <http://opensource.org/licenses/MIT> and <http://opensource.org/licenses/BSD-3-Clause>. The source code for this software is available from <http://xilium.bitbucket.org/cefglue/>.
- D3 Data Driven Documentation, version 3.4.1, which is licensed under the New BSD License. The license can be downloaded from <https://github.com/mbostock/d3/blob/master/LICENSE>. The source code for this software is available from <http://d3js.org/>.
- OpenLayers, version 2.12, which is licensed under the Modified BSD License. The license can be downloaded from <http://svn.openlayers.org/trunk/openlayers/license.txt>. The source code for this software is available from <http://trac.osgeo.org/openlayers/browser>.
- OpenLayers, version 3, which is licensed under the BSD 2-Clause Licence. The license which can be downloaded from <https://github.com/openlayers/ol3/blob/master/LICENSE.md>. The source code for this software is available from <https://github.com/openlayers/ol3>.
- Proj4js, version 1+, which is licensed under the Apache License, Version 2, January 2004. The license can be downloaded from <http://www.apache.org/licenses/LICENSE-2.0.html>. The source code for this software is available from <http://trac.osgeo.org/proj4js/>.
- requireJS, version 2.1.2, which is licensed under the MIT License or the New BSD License. The license can be downloaded from <https://github.com/jrburke/requirejs/blob/master/LICENSE>. The source code for this software is available from <http://requirejs.org/>.

- Apache Cordova, version 11.1.0, which is licensed under the Apache License, Version 2, January 2004. The license can be downloaded from <http://www.apache.org/licenses/LICENSE-2.0.html>. The source code for this software is available from <http://phonegap.com/download/>.
- Xilium.CefGlue, version 75.1, which is unlicensed. The source code for this software is available from <https://gitlab.com/xiliumhq/chromiumembedded/cefglue>.
- Chromium Embedded Framework, version 75.0, which is licensed according to the following criteria:

Copyright (c) 2008-2014 Marshall A. Greenblatt. Portions Copyright (c) 2006-2009 Google Inc. All rights reserved.

Redistribution and use in source and binary forms, with or without modification, are permitted provided that the following conditions are met:

- \* Redistributions of source code must retain the above copyright notice, this list of conditions and the following disclaimer.
- \* Redistributions in binary form must reproduce the above copyright notice, this list of conditions and the following disclaimer in the documentation and/or other materials provided with the distribution.
- \* Neither the name of Google Inc. nor the name Chromium Embedded Framework nor the names of its contributors may be used to endorse or promote products derived from this software without specific prior written permission.

THIS SOFTWARE IS PROVIDED BY THE COPYRIGHT HOLDERS AND CONTRIBUTORS "AS IS" AND ANY EXPRESS OR IMPLIED WARRANTIES, INCLUDING, BUT NOT LIMITED TO, THE IMPLIED WARRANTIES OF MERCHANTABILITY AND FITNESS FOR A PARTICULAR PURPOSE ARE DISCLAIMED. IN NO EVENT SHALL THE COPYRIGHT OWNER OR CONTRIBUTORS BE LIABLE FOR ANY DIRECT, INDIRECT, INCIDENTAL, SPECIAL, EXEMPLARY, OR CONSEQUENTIAL DAMAGES (INCLUDING, BUT NOT LIMITED TO, PROCUREMENT OF SUBSTITUTE GOODS OR SERVICES; LOSS OF USE, DATA, OR PROFITS; OR BUSINESS INTERRUPTION) HOWEVER CAUSED AND ON ANY THEORY OF LIABILITY, WHETHER IN CONTRACT, STRICT LIABILITY, OR TORT (INCLUDING NEGLIGENCE OR OTHERWISE) ARISING IN ANY WAY OUT OF THE USE OF THIS SOFTWARE, EVEN IF ADVISED OF THE POSSIBILITY OF SUCH DAMAGE.

The source code for this software is available from <http://opensource.spotify.com/cefbuilds/index.html#>

February 27, 2024

# Table of Contents

**Mapping Link Install**

---

Installing Confirm  
Mapping Link 6

# Mapping Link Install

These notes describe how the Confirm Mapping Link for any DDE or Command Line compatible GIS application is installed on a Workstation where Confirm has already been installed. They are designed to allow technically aware users with a working knowledge of the DDE / Command Line compatible GIS application to install software on the Installation Server and client Workstations.

This document only covers the Confirm aspects of the installation. Separate instructions are required to configure the GIS application.

After reading these notes you should be able to:

- Install and test the Confirm Mapping Link on a new Workstation

The guide should be used in conjunction with the **Mapping Link API Specification**.

## In this section

---

Installing Confirm Mapping Link

6

# Installing Confirm Mapping Link

## INSTALLATION SERVER INSTALL

The Installation Server contains the networked installation files for the Confirm application and the Confirm Mapping Link files.

This section describes how to setup the Confirm Mapping Link installation files on an installation server so that it is suitable to be used for workstation installations. Confirm will not be supplying the Confirm Mapping Link files.

### Installation Server Directory Structure

The following table shows the preferred directory structures for the Confirm Mapping Link installation files on the Installation Server. The DirNames referred to in the table are used to identify the target directory and its function and are referenced in the remainder of the document.

Installation Server Name:		
Preferred Directory	DirName	Description
SBS\INSTALL\	Install Server root	Root directory for installation files
Installed Sub Directories		
Client	Install Server Client root	Root directory for client Workstation installation files
Client\Confirm	CONFIRM Application Installer Directory	Installation files for the Confirm application for PC workstations
Client\Confirm\GIS	CONFIRM Mapping Link Installer Directory	Installation files for workstation installs of the Confirm Mapping Link.

If a different structure is adopted from the one recommended, then this should be recorded and made available to Confirm and its appointed support agents for support purposes.

Set up the directory structure on the Installation server as defined in the above table, and copy the Mapping Link files to the Confirm Mapping Link Installer Directory.

## WORKSTATION INSTALLATION

This section describes how to install the Confirm Mapping Link onto a client Workstation. This process will need to be performed for each client Workstation.

### Client Workstation Directories

The table below displays the preferred workstation installation directory structure.

Workstation:		
Application Directory	DirName	Description
Program Files		
Program Files\Confirm	Confirm Application directory	Location of the Confirm application files.

<b>Workstation:</b>		
<b>Application Directory</b>	<b>DirName</b>	<b>Description</b>
Program Files\Confirm\GIS	Confirm Mapping Link Application directory	Location of the Confirm Mapping Link files.

<b>Transfer Directory</b>		
SBS		
SBS\Transfer		
SBS\Transfer\GIS	Local Transfer directory	Local directory for storing transfer data used by Confirm and the Confirm Mapping Link

Create the directory structure on the Workstation as defined in the table above and copy the Confirm Mapping Link program files from the Confirm Mapping Link Installer Directory to the Confirm Mapping Link Application directory. Again, Confirm do not provide these files.

## Client Workstation Configuration

### Confirm Registry Settings

All registry settings for the Confirm applications reside off the following key:

- HKEY\_LOCAL\_MACHINE\Software\SouthBank Systems

Each Confirm application installed on a workstation has its own key in the registry which resides under the key specified above and is named the same as the Confirm application. The Confirm applications relevant to the Mapping Link are: Confirm Arboriculture, Confirm Engineering, Confirm Enterprise, Confirm Environmental, Confirm Highways, Confirm Pavement Manager, Confirm Property, Confirm Street Lights and Confirm Street Works.

### Confirm Mapping Link Registry Settings

For each Confirm application that is to have the Confirm Mapping Link enabled, create the following keys in the Registry under ...Software\SouthBank Systems\

<b>Key</b>	<b>Description</b>
CurrentEngine	The name of the current Mapping Link used by Confirm.
Engine1	The name of the first Mapping Link.
Engine2	The name of the second Mapping Link.

Where the Confirm application is to have only one Mapping Link configured, it is only necessary to create the CurrentEngine and Engine1 keys. Where multiple Mapping Links are to be configured, the CurrentEngine key must be populated and the name of the Mapping Link (e.g. WINMAP) populated against a unique engine key (e.g. Engine1).

Create a new key under the Software\SouthBank Systems\

E.g. Software\SouthBank Systems\Confirm Highways\Mapping\WinMap

The following keys are then to be populated for the Mapping Link under the key created in the above step under ...Software\SouthBank Systems\>Asset Type<\Mapping\>Mapping Link Name<:

<b>Key</b>	<b>Description</b>
ApplicationName	Set to the name of the GIS server application (Mapping application) for DDE purposes or the full

Key	Description
LinkType	path name of the application for Command Line interface purposes. EXE if using command line interface and DDE (or blank) if using DDE interface.
TopicName	Set to 'System'. Setting not required if LinkType is set to EXE.
ExportFile	The path to the con2gis.txt file, which is used to temporarily store data, sent from Confirm to the Mapping application. This is set to 'c:\sbs\Transfer\GIS\con2gis.txt'.
SelectCommand	Set to the command for showing asset details in the Mapping application for selections made within Confirm.
UpdateCommand	Set to the command for updating asset details in the Mapping application for selections made within Confirm.
XYCommand	Set the command used to instruct the Mapping application to zoom to a specified point and display the text annotation
DeleteCommand	Set the command used to instruct the Mapping application to delete the specified assets
DynaSegCommand	Set the command used to instruct the Mapping application to draw linear events
DynaSegFile	The path to the temporary file that will be used in the DynaSegCommand

### Testing DDE

If no GIS exists, then a DDE test with Microsoft Excel can be performed with the following settings:

```
ExportFile=C:\SBS\TRANSFER\GIS\CONTOMAP.TXT
ApplicationName=EXCEL
TopicName=system
UpdateCommand=[open("%1")]
SelectCommand=[open("%1")]
```

### Sending Features from Confirm

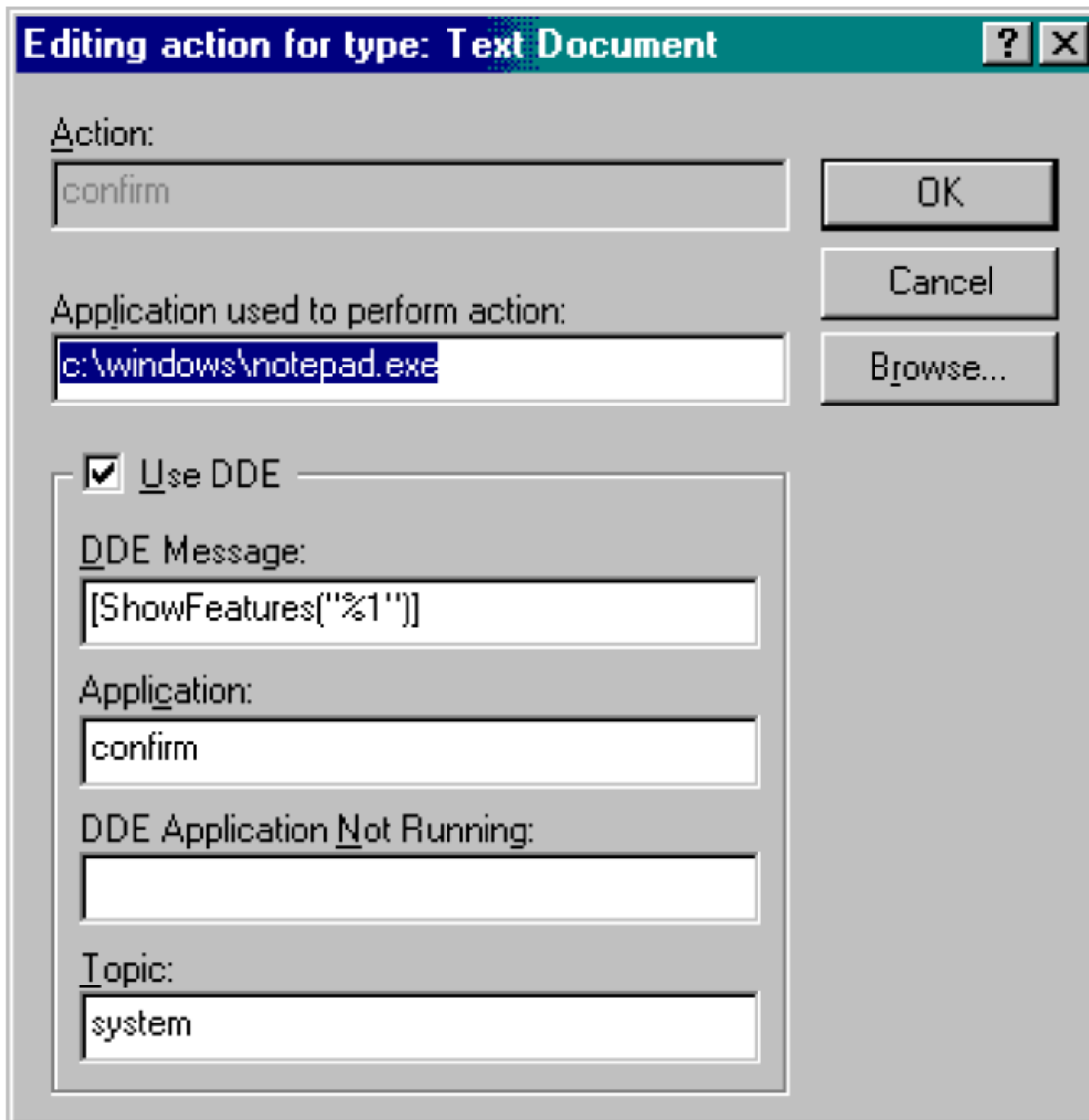
Start Confirm and open the Select Features for Map window. Find an appropriate Site, select two features and click on the Update button.

Excel will not necessarily take focus, but it should have open the CONTOMAP.TXT file, with column headings and feature information displayed in quotes.

### Sending Features back to Confirm

To send features back into Confirm, open Explorer, choose View, Options or Folder Options, and choose File Types. Find Text Document, select and choose Edit. Click New. Enter a new action name, for example Confirm. In the box "Application used to perform action" enter the path to the executable 'notepad.exe' (usually in the c:\windows directory). Check the Use DDE check box and a number of new fields appear. Fill them in using the following screen shot as an example:





Edit the textfile used to send data from Confirm to Excel. It should only have one "item" in it, and should look something like the following:

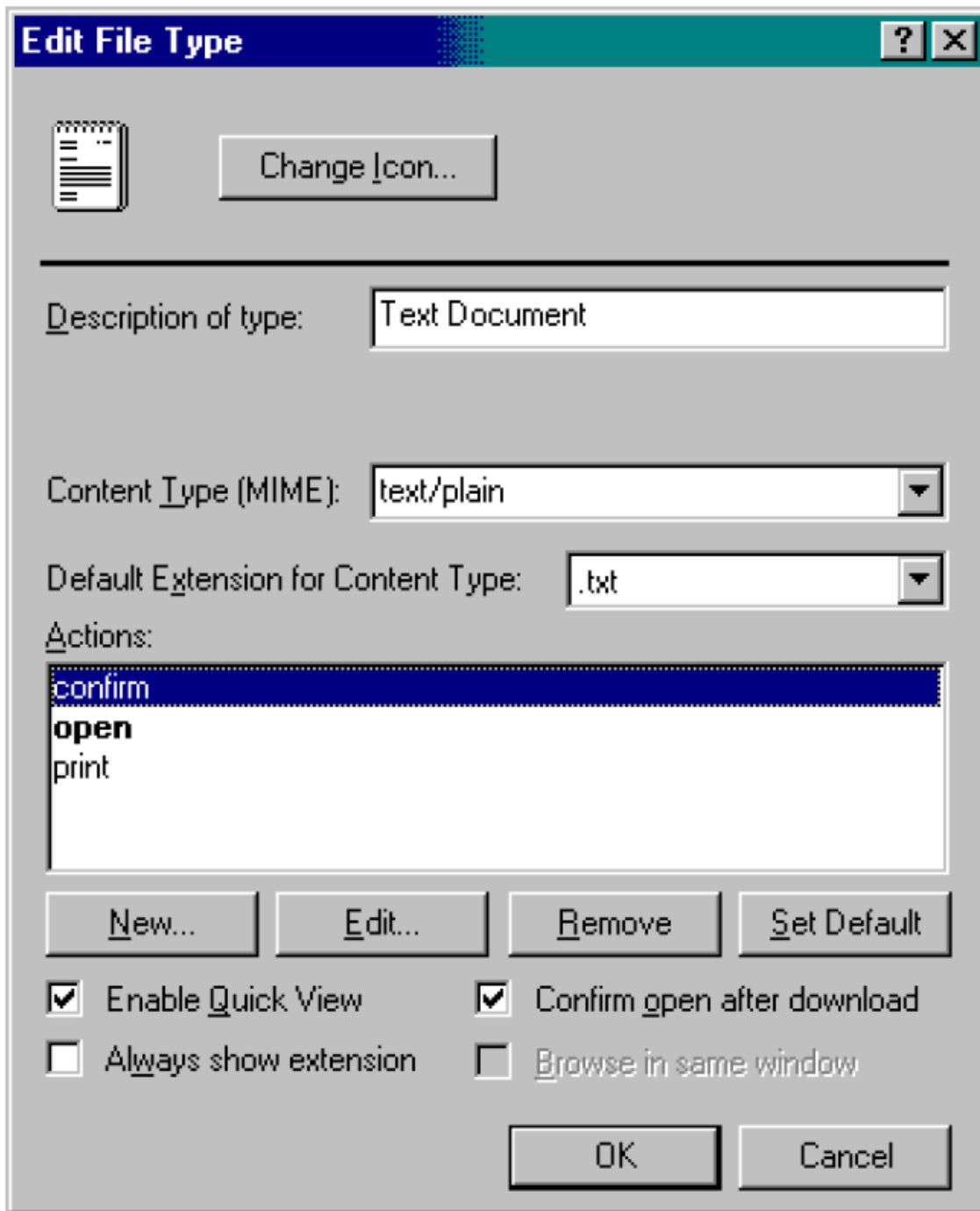
```
Asset Id
ABBEYCRT0000002300
```

Once this file has been saved, make sure Confirm is open, then right click your saved file. One of the options from the menu should be Confirm. When you select this, it should have the effect whereby Confirm will come to the front, and be the currently active application. Confirm should then show you the feature or section details for the item that was in the file.

These tests require to be carried out on each of the PC's designated to be installed with the Confirm Mapping link.

### Tidy Up - Removing DDE entries

If testing has been done without a GIS installed, DDE entries created to facilitate testing now need to be removed. This is done by opening Explorer, choose View, Options or Folder Options, and choose File Types. Find Text Document, select and choose Edit. In the Actions window, select the Confirm action added previously and click the Remove button.



### Testing the Command Line Interface

If no GIS exists, then a Command Line test with Notepad can be performed with the following settings:

```
ExportFile=C:\SBS\TRANSFER\GIS\CONTOMAP.TXT
ApplicationName=Notepad.exe
LinkType=EXE
UpdateCommand="%1"
SelectCommand="%1"
```

### Sending Features from Confirm

Start Confirm and open the Select Features for Map window. Find an appropriate Site, select two features and click on the Update button. Notepad should take focus and open the CONTOMAP.TXT file, with column headings and feature information displayed in quotes.

## TROUBLESHOOTING

### Problems Invoking Mapping link

#### **DDE communications error. Link not started**

This is displayed when Confirm cannot establish communication with the Target Application. Make sure that the application is loaded at the same time.

#### **DDE communications error unable to open output file.**

This may be caused by the ExportFile in the Local Mapping Transfer directory being used by another program. Remove any other references to the ExportFile (contomap), i.e. close any applications that may have the file open.

Also make sure that the ExportFile directory exists and is correct.

#### **Command Line link communications error. Link failed**

This is displayed when Confirm cannot establish communication with the Target Application. Make sure that the application path name is correct.